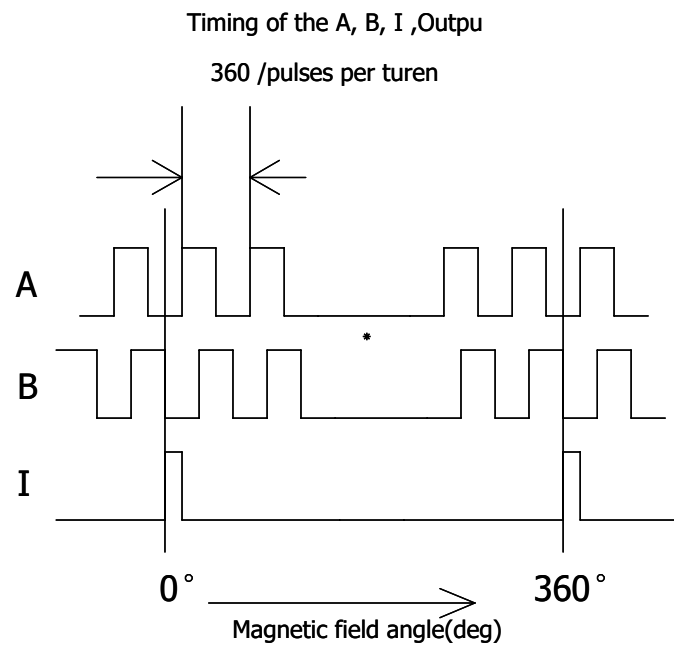
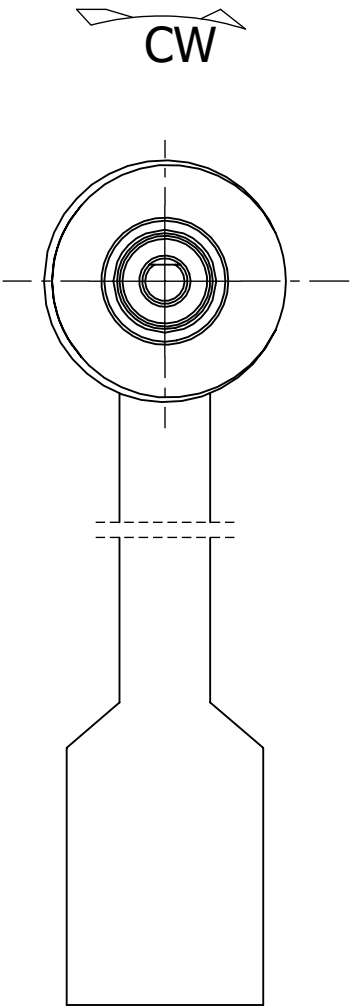
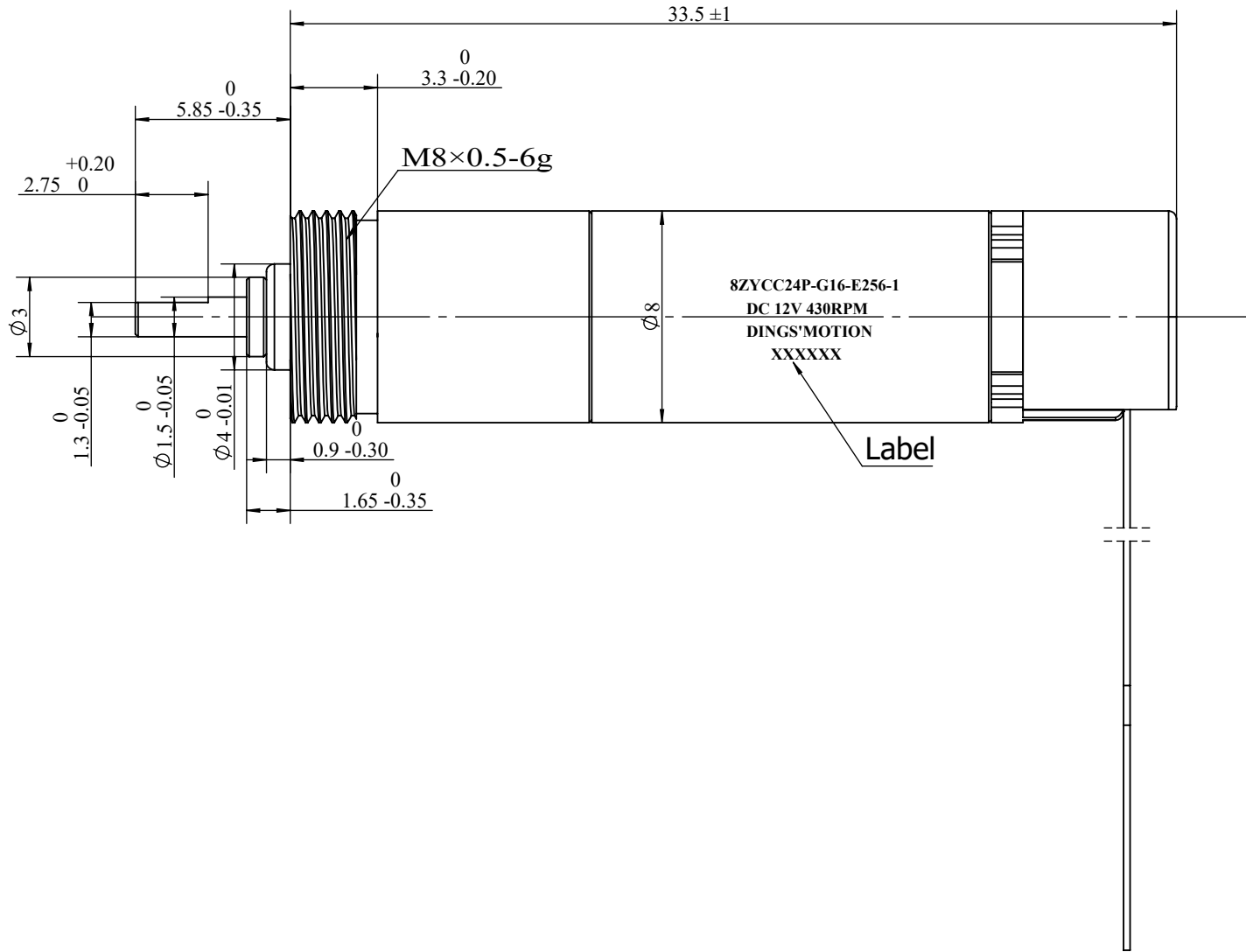
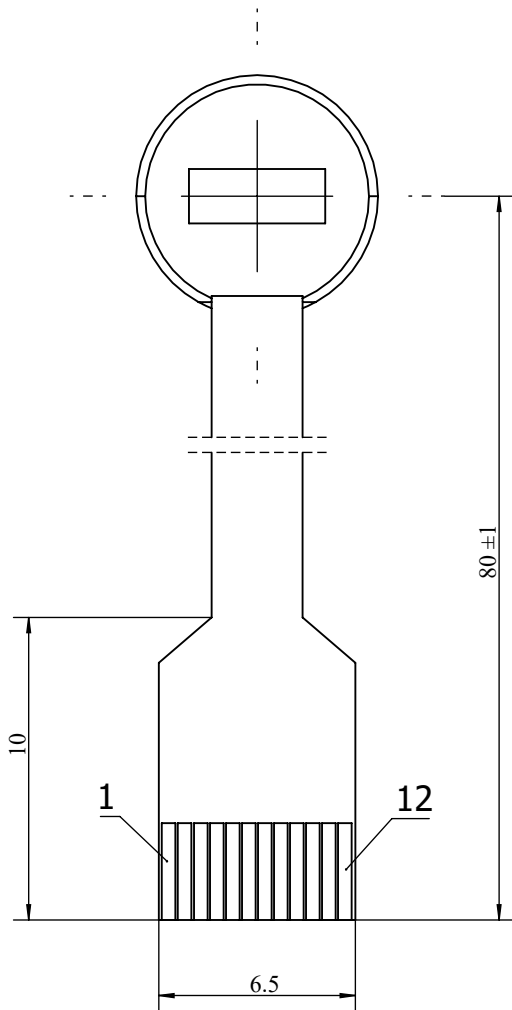


8ZYCC24P-G16-E256-1

REVISION			
REV.	DATE	DESCRIPTION	DRAWN BY

LABEL

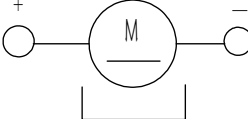
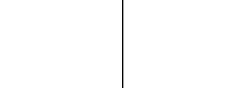

8ZYCC24P-G16-E256-1
DC 12V 430RPM
DINGS'MOTION
XXXXXX



encoder		
type	magnetic encode	
Number of channels	3	
voltage	3.3±10%	V
magnetic pole	2	pole
Counts per turn	256	
Output signal	INC	
output current per channel	-4.....4	mA
Direction of rotation	A before B CW	
Output signal driver	Single Ended,CMOS	
Operating temperature range	-40...100 °C	

wiring diagram	
pin 1	motor +
pin 2	motor -
pin 3	NC
pin 4	gnd
pin 5	Vcc
pin 6	A
pin 7	B
pin 8	I
pin 9	NC
pin 10	NC
pin 11	NC
pin 12	NC

parameter of motor @25°C		
supplier voltage	12	V /DC
gearbox ratio	1:16	
rotation(viewed from shaft end)	CW	
no load speed	730±10%	RPM
no load current	≤30	mA
speed @ cont.torque	430±10%	RPM
current @ cont.torque	≤80	mA
continuous torque	6.7	mN.M
continuous output power	302	mW

CUSTOMER		NOTICE TO PERSONS RECEIVING THIS DRAWING THIS DRAWING IS ONLY CONDITIONALLY ISSUED, AND FOR THE SOLE PURPOSE OF INFORMING LICENSEES AND ASSOCIATE CONTRACTORS OF DINGS' MOTION, AND VENDORS THERETO AND CUSTOMERS THEREOF, RECEIPT OR POCESSION THEREOF DOES NOT CONFER TO TRANSFER ANY RIGHT IN THE SUBJECT MATTER OF THE DRAWING. THE DESIGN, CONSTRUCTION, TECHNICAL INFORMATION AND ALL OTHER SUBJECT MATTER SHOWN IN THIS DRAWING ARE AND REMAIN, EXCEPT AS MAY BE OTHERWISE INDICATED BY WRITTEN NOTICE HEREON, THE EXCLUSIVE PROPERTY OF SAID CORPORATION. THIS DRAWING MAY BE REPRODUCED ONLY BY LICENSEES AND ASSOCIATE CONTRACTORS OF SAID CORPORATION AND ONLY FOR LICENSED MANUFACTURE, AND BY VENDORS MANUFACTURING FOR SAID CORPORATION AND ONLY FOR LICENSEES AND ASSOCIATE CONTRACTORS.																			
WIRING CHART		EXCITING SEQUENCE				UNLESS OTHERWISE SPECIFIED ALL DIMENSIONS ARE IN MILLIMETERS AND TOLERANCES ARE AS BELOW PER ISO2768-cK.				DRAWN	Dai	DATE	2025/7/30		DINGS						
				LINEAR		ANGULAR		APPRVD				DATE									
				0~3		±0.2		0~10		±1°30'		MODEL		8ZYCC24P-G16-E256-1							
				3~6		±0.3		10~15		±1°											
				6~30		±0.5		50~120		±30'											
				30~120		±0.8		120~400		±15'									SIZE		A3
								SCALE		1:1	REV.	01									