

DINGS'

Precision Motion Specialist

CORELESS PUSH ROD ACTUATOR

Jiangsu DINGS' Intelligent Control Technology Co., Ltd.





Since its establishment in 2008, Jiangsu DINGS' Intelligent Control Technology Co., Ltd. has adhered to the business philosophy of **"Quality comes from responsibility, and details determine success or failure."**

The company is committed to becoming a precision motion specialist and a world-class provider of motion control solutions.

DINGS' offers a comprehensive range of products, including precision stepper motors, DC motors, voice coil motors, lead and ball screw linear actuators, PMSM motors for new energy vehicles, and motion controllers.

SCALE

200+ Processing Equipment



20+ Assembly Lines



100+ Testing Instruments



140+ Patents



GROWTH

2008 Company founded and DINGS' brand registered

2010 Established DINGS' MOTION USA

2016 Established DINGS' Korea

2019 Joined LEILI Group

2021 Established Changzhou Intelligent Manufacturing Factory
Listed on China's NEEQ ('New Third Board') Market

2022 Set up R&D Center in Korea

Listed on the Beijing Stock Exchange [Stock Code : 920593]

2023 Conversion to DINGS' Korea Corporation
Established of DINGS' Japan

2024 Completed Headquarters Smart Manufacturing Base
Established of DINGS' Motion Europe

2025 Establishment of Thailand Manufacturing Base

CERTIFICATIONS



PRODUCT WARRANTY

DINGS' provides a 1-year warranty from the factory shipment date. If caused by quality issues, free repair is provided.

Free maintenance does not apply in the following cases:

- Warranty period expired
- (including nameplate loss or intentional damage)
- Improper installation, use, or environment
- Unauthorized disassembly or modification
- Repaired by non-accredited personnel
- Damage from natural disasters or force majeure

DINGS' is dedicated to delivering quality, reliability, and responsibility in every product and service.

www.dingsmotion.com

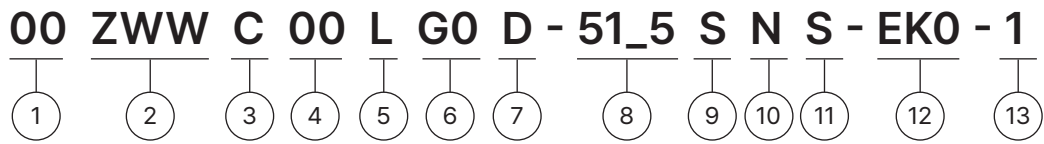
Content

CORELESS PUSH ROD ACTUATOR

Part number construction	4
10 mm	5
12 mm	6
16 mm	7
22 mm	8



Part Number Construction



① Motor Size

Motor Size (mm)	10	12	16	22
-----------------	----	----	----	----

② Product Name

ZWW = Coreless Brushless DC Motor

③ Motor Shape

C = Circular Type

④ Motor Length

Uni : mm

When the length involves decimal points, use "_" instead

⑤ Motor Casing

L = Aluminum

T = Stainless steel / Iron

⑥ Gear Ratio

00 = Gear Ratio

⑦ Lead Screw Code

Please refer to lead screw code selection table

⑧ Effective Stroke Length

⑨ Screw Surface Treatment

S = Standard (No teflon coating)

⑩ End Machining

C = Customize

N = None

⑪ Nut Style

S = Standard flange nut

⑫ Encoder

0 = Resolution

⑬ Customer Serial Number

Example

Part Number 10ZWWC25L-G18AB-16SNS-EK1024-001

Description

- Motor diameter 10 mm
- Coreless Brushless DC Motor
- Motor length 25 mm
- Stainless steel housing
- Gear ratio 1:18
- AB lead
- Effective stroke 16 mm
- Customization: None
- Encoder resolution: 1024
- Custom serial number: 001

10mm Series

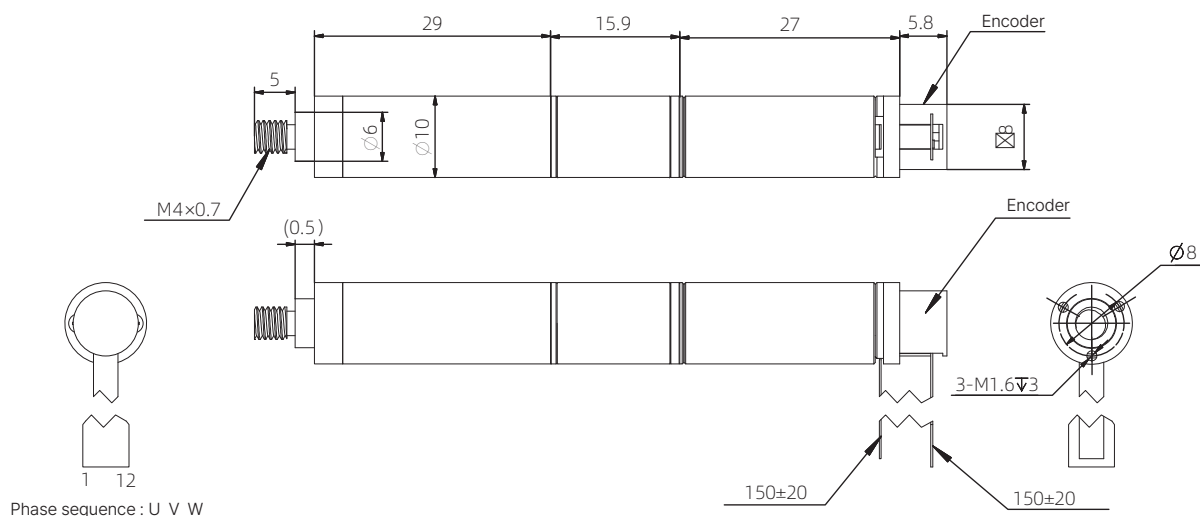


Motor Characteristics

Motor part number		10ZWWC25L
Motor size	mm	10
Rated voltage	V	12
Rated current	A	0.8
Lead screw pitch	mm	1
Standard stroke (customizable)	mm	15
Maximum stroke	mm	25
Maximum speed	mm/s	28
Rated thrust	N	80
Peak thrust (short-time)	N	160
Gear ratio	-	18
Weight	g	31.9
Overall dimensions	mm	$\Phi 10 \times 83.2$
Operating temperature	°C	-20 ~ +50
Repeatability	mm	± 0.08
Encoder type	-	Incremental magnetic encoder
Number of channels	-	3
Encoder supply voltage	V	3.3
Resolution	-	1024

The above data is based on a gear ratio of 18:1

Dimensional Drawings



12mm Series

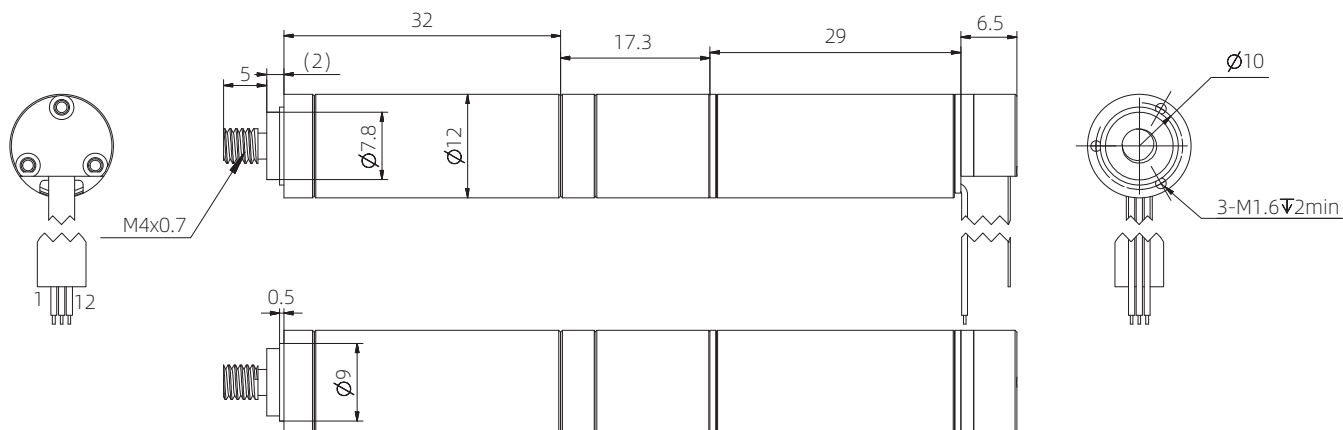


Motor Characteristics

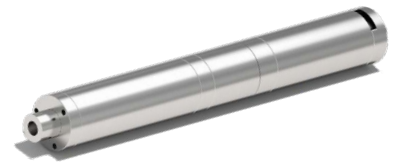
Motor part number		12ZWWC29L
Motor size	mm	12
Rated voltage	V	12
Rated current	A	0.65
Lead screw pitch	mm	1.27
Standard stroke (customizable)	mm	20
Maximum stroke	mm	30
Maximum speed	mm/s	14
Rated thrust	N	85
Peak thrust (short-time)	N	170
Gear ratio	-	18
Weight	g	51.3
Overall dimensions	mm	Φ12 × 91.8
Operating temperature	°C	-20 ~ +50
Repeatability	mm	±0.08
Encoder type	-	Incremental magnetic encoder
Number of channels	-	3
Encoder supply voltage	V	3.3
Resolution	-	1024

The above data is based on a gear ratio of 18:1

Dimensional Drawings



16mm Series

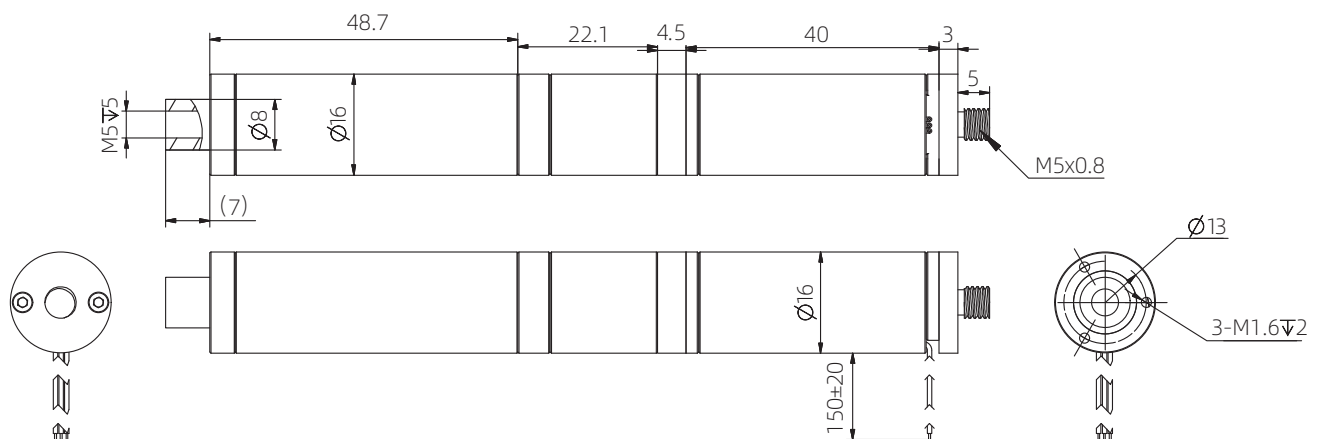


Motor Characteristics

Motor part number		16ZWWC40L
Motor size	mm	16
Rated voltage	V	12
Rated current	A	2.6
Lead screw pitch	mm	1.27
Standard stroke (customizable)	mm	30
Maximum stroke	mm	40
Maximum speed	mm/s	20
Rated thrust	N	200
Peak thrust (short-time)	N	400
Gear ratio	-	28
Weight	g	131.4
Overall dimensions	mm	$\Phi 16 \times 131.3$
Operating temperature	°C	-20 ~ +50
Repeatability	mm	± 0.08
Encoder type	-	Incremental magnetic encoder
Number of channels	-	3
Encoder supply voltage	V	5
Resolution	-	1024

The above data is based on a gear ratio of 18:1

Dimensional Drawings



22mm Series

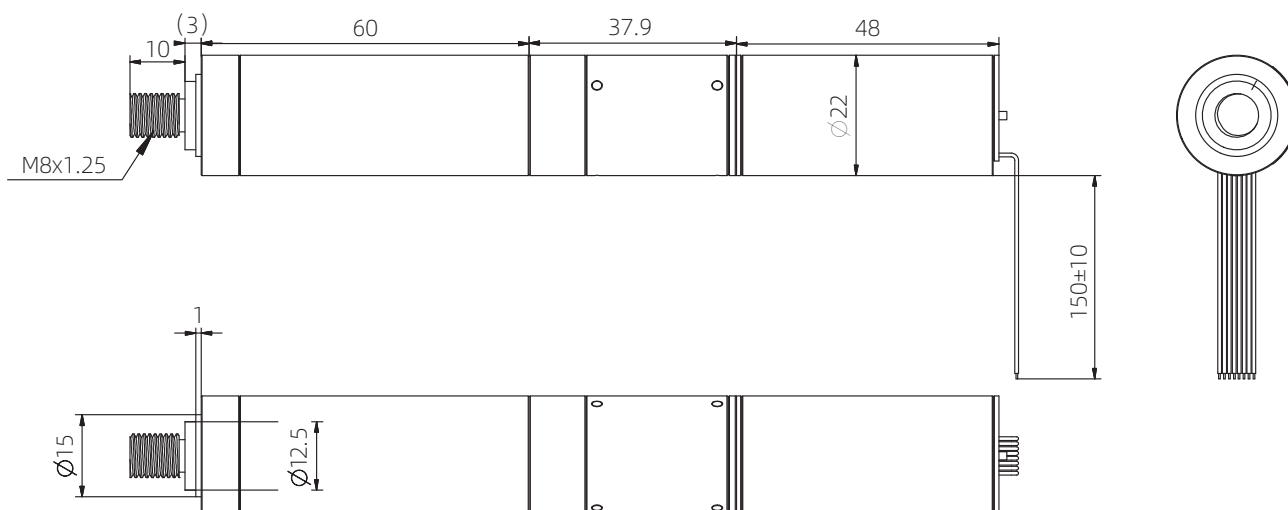


Motor Characteristics

Motor part number		22ZWWC48L
Motor size	mm	22
Rated voltage	V	24
Rated current	A	1.1
Lead screw pitch	mm	1
Standard stroke (customizable)	mm	40
Maximum stroke	mm	50
Maximum speed	mm/s	5
Rated thrust	N	750
Peak thrust (short-time)	N	1500
Gear ratio	-	26
Weight	g	318
Overall dimensions	mm	Φ22 × 168.9
Operating temperature	°C	-20 ~ +50
Repeatability	mm	±0.08
Encoder type	-	Incremental magnetic encoder
Number of channels	-	3
Encoder supply voltage	V	5
Resolution	-	1024

The above data is based on a gear ratio of 18:1

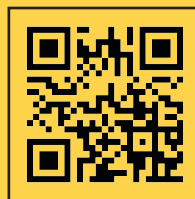
Dimensional Drawings





HEADQUARTER, CHINA

ENG Web



Partners Web



YouTube



Jiangsu DINGS' Intelligent Control Technology Co., Ltd.

No. 2850 Luheng Road, Changzhou Economic Development Zone, Jiangsu Province, China

Tel : +86-519-85177826

Fax : +86-519-85177807

E-mail : info@dingsmotion.com

www.dingsmotion.com

Shenzhen Office

Room 1105, Block C, CIMC industry demonstration park, Qiaoming Road, Guangming district, Shenzhen City

E-mail : info@dingsmotion.com

INTERNATIONAL OFFICE

DINGS' Motion USA

355 Cochrane Circle Morgan Hill,
CA 95037

+1-408-612-4970

sales@dingsmotionusa.com

www.dingsmotionusa.com

DINGS' Motion Europe

4 Avenue du Grand Trémoutier
44120 - Vertou - France

+33-(0)6-41-37-80-07

sebastien@dingsmotion.com

<http://fr.dingsmotion.com>

DINGS' Korea Co., Ltd.

C-702, 158, Haneulmaeul-ro, Isandong-gu,
Goyang-si, Gyeonggi-do, Republic of Korea

+82-31-994-0755

daniel@dingsmotion.com

www.dingsmotion.kr

www.dkps.co.kr / en.dkps.co.kr

DINGS' JAPAN

101, 2-27-18, Nishi-kojiya, Ota-ku,
Tokyo 144-0034 JAPAN

+81-3-6811-1335

tsukahara@dingsmotion.com

<http://jp.dingsmotion.com>

This catalog is the sole property of DINGS' and without the written authorization of DINGS', any copy or forwarding is prohibited
DINGS' reserves the right to make changes without further notification to any products herein to improve the reliability, function or design
DINGS' reserves the final interpretation